

## Analysis of Trypsin Digested Myoglobin by HPLC-MS

**Instrumentation:** [Agilent HPLC system with AB Sciex API 3000](#) (Ctrl + Click to follow link)

**Column:** Kinetex™ 2.6 µm C18 100 Å, 150 x 4.6 mm, or Halo 2.7µm C18 150 x 4.6 mm, or Xbridge 3.5µm C18 150 x 4.6 mm

**Elution Type:** Gradient

**Mobile Phase A:** Water with 0.1% Formic Acid

**Mobile Phase B:** Acetonitrile with 0.1% Formic Acid

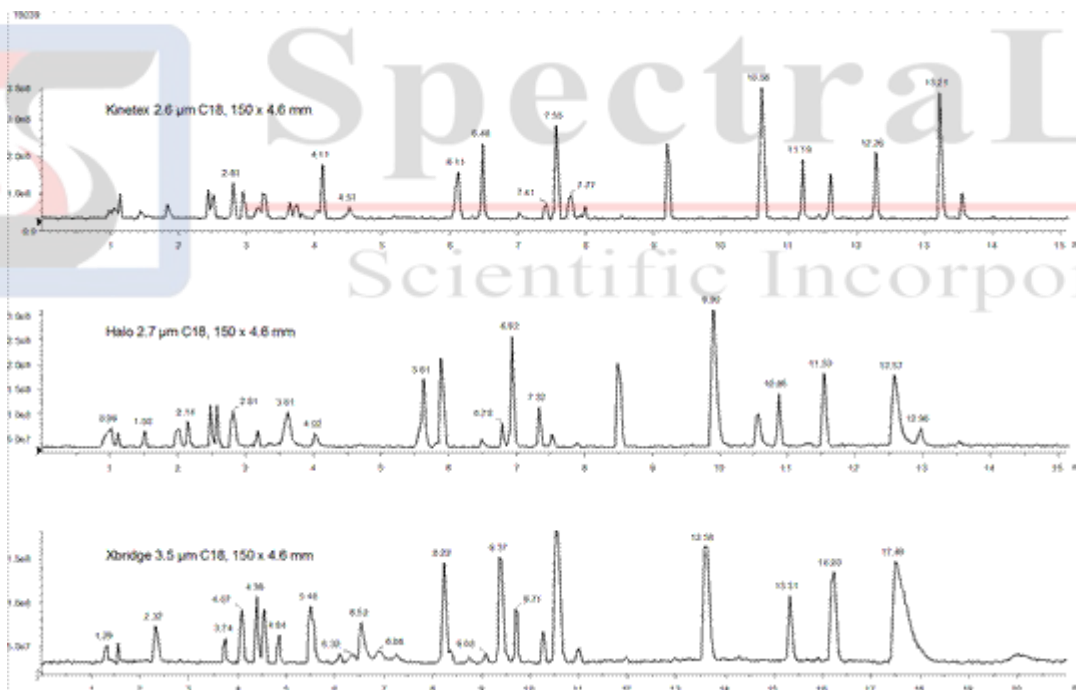
**Gradient Profile:**

Step No.	Time (min)	Pct A	Pct B
1	0	97	3
2	25	32	68
3	27	5	95
4	27.1	97	3

**Detection:** [AB Sciex API 3000™ Mass Spectrometer \(MS\) @ amu \(22°C\)](#)

**Flow Rate:** 1.2 mL/min

**Col. Temp:** 25 °C



**Analyte Name:** Myoglobin

**Additional Detail:** (tryptic digest)

**Retention Time:** 1.2 min

**Reference:** <http://www.phenomenex.com/Application/Detail/19039>