

Analysis of human hemoglobin chains

Instrument: [Varian ProStar HPLC System](#)

Substances: Hem; beta-globin; alpha-globin; $\text{A}^{\gamma}\text{T}$ -globin; G^{γ} -globin; $\text{A}^{\gamma}\text{I}$ -globin

Column: EC 250/4 NUCLEOSIL[®] 300-5 C4 MPN

Phase: [NUCLEOSIL[®] C4 MPN](#)

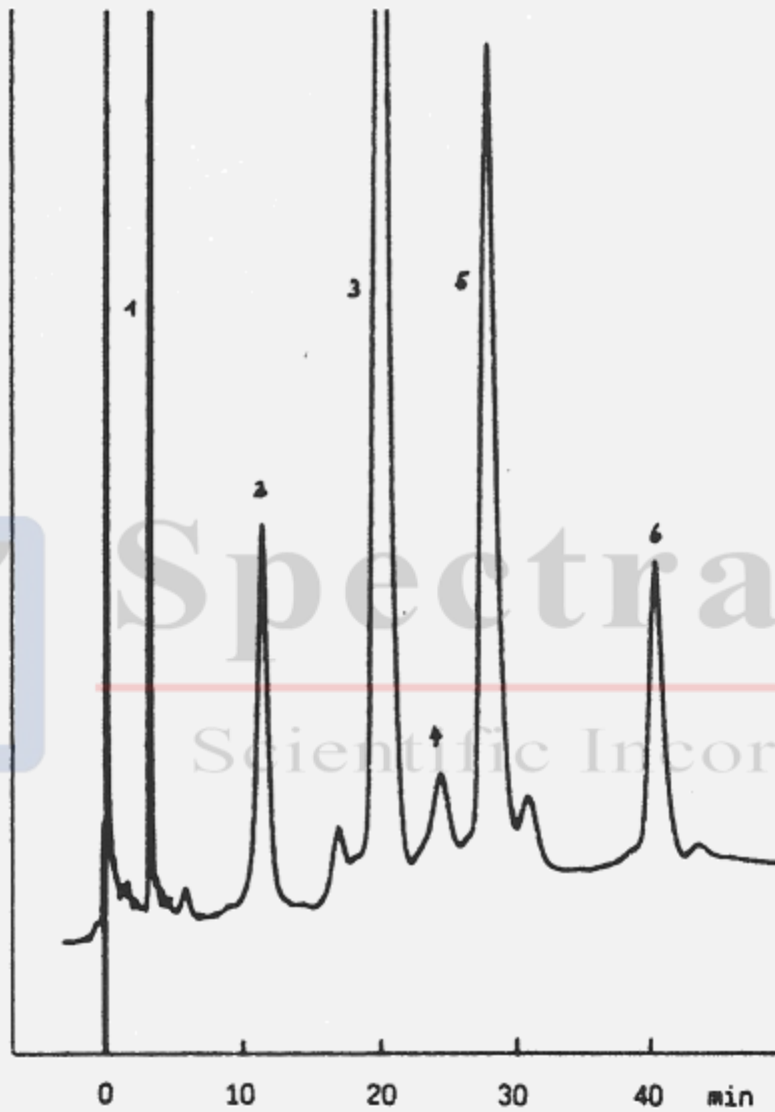
REF number: 720245.40

Conditions: Eluent A: 20 % acetonitrile, 80 % water, 0.1 % trifluoroacetic acid (TFA)
Eluent B: 60 % acetonitrile, 40 % water, 0.1 % trifluoroacetic acid (TFA)
Gradient: linear 40–60 % B in 60 min
Flow rate: 1 mL/min
Injection volume: 10 μL

Detection: UV, 220 nm



Scientific Incorporation



Legend:

Separation of a hemolyzate of human blood

1. Hem
2. beta-globin
3. alpha-globin
4. AgammaT-globin
5. Ggamma-globin
6. AgammaI-globin

Reference: <http://www.mn-net.com/DesktopModules/TabID/9260/default.aspx>