

Morphine and Codeine in Wild Poppies For over one hundred years, following the introduction of European cereal crops to Australia, wild poppies have been a problem weed, especially in oatfields after good seasonal rainfall

Instrument: [Shimadzu LC-2010A HPLC System](#)

Conditions

Column: Spherisorb S5 octyl,
250 mm x 4.6 mm ID
Guard Column: Spherisorb S5 Octyl,
50 mm x 4.6 mm ID
Mobile Phase: 20% acetonitrile in water
containing 0.01 M octane
sulphonic acid and 0.2%
triethylammonium phosphate,
pH 3
Flow Rate: 1 ml/min
Wavelength: 285 nm

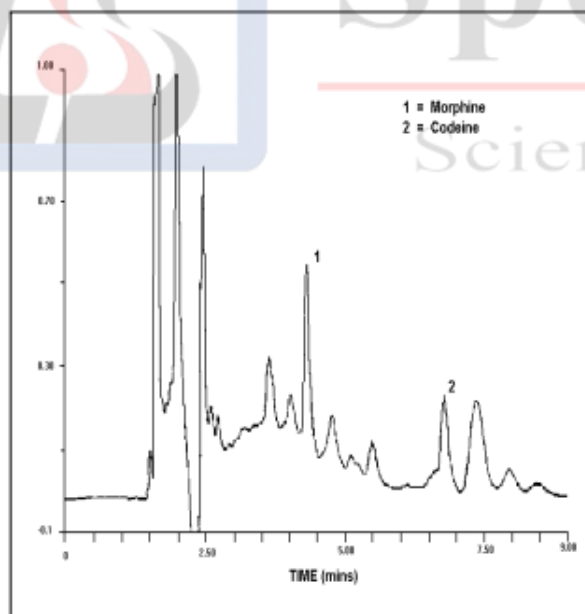


Figure 1 Methanolic extract of *P.setigerum* capsules

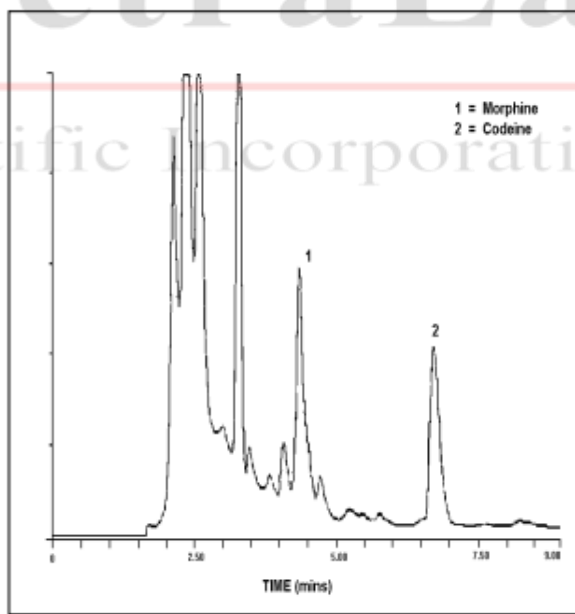


Figure 2 Alkaline extract of *P.setigerum* capsules

Reference: http://www.gbcsscientific.com/appnotes/HPLC_app_note_003.pdf